



UniversitätsKlinikum Heidelberg

Allogene Stammzelltransplantation: Jahresbericht 2011

Sektion Stammzelltransplantation

Abteilung Innere Medizin V

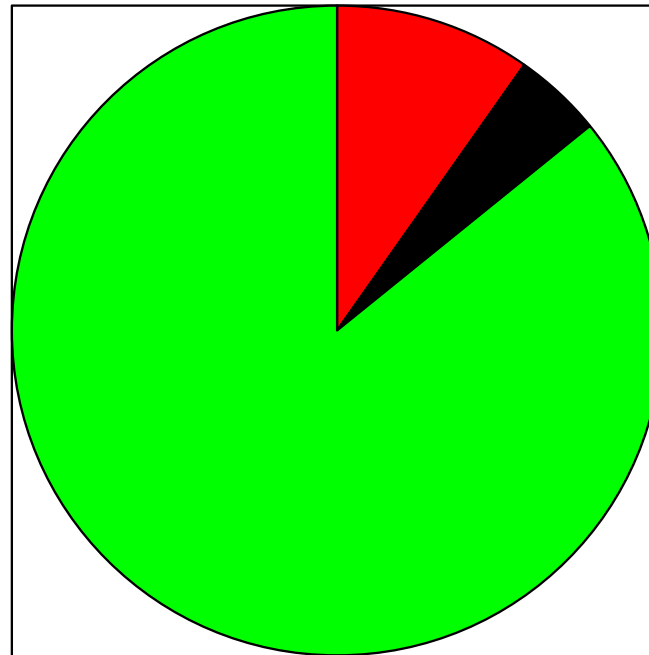
Universitätsklinikum Heidelberg

27.02.2012

Zahlen



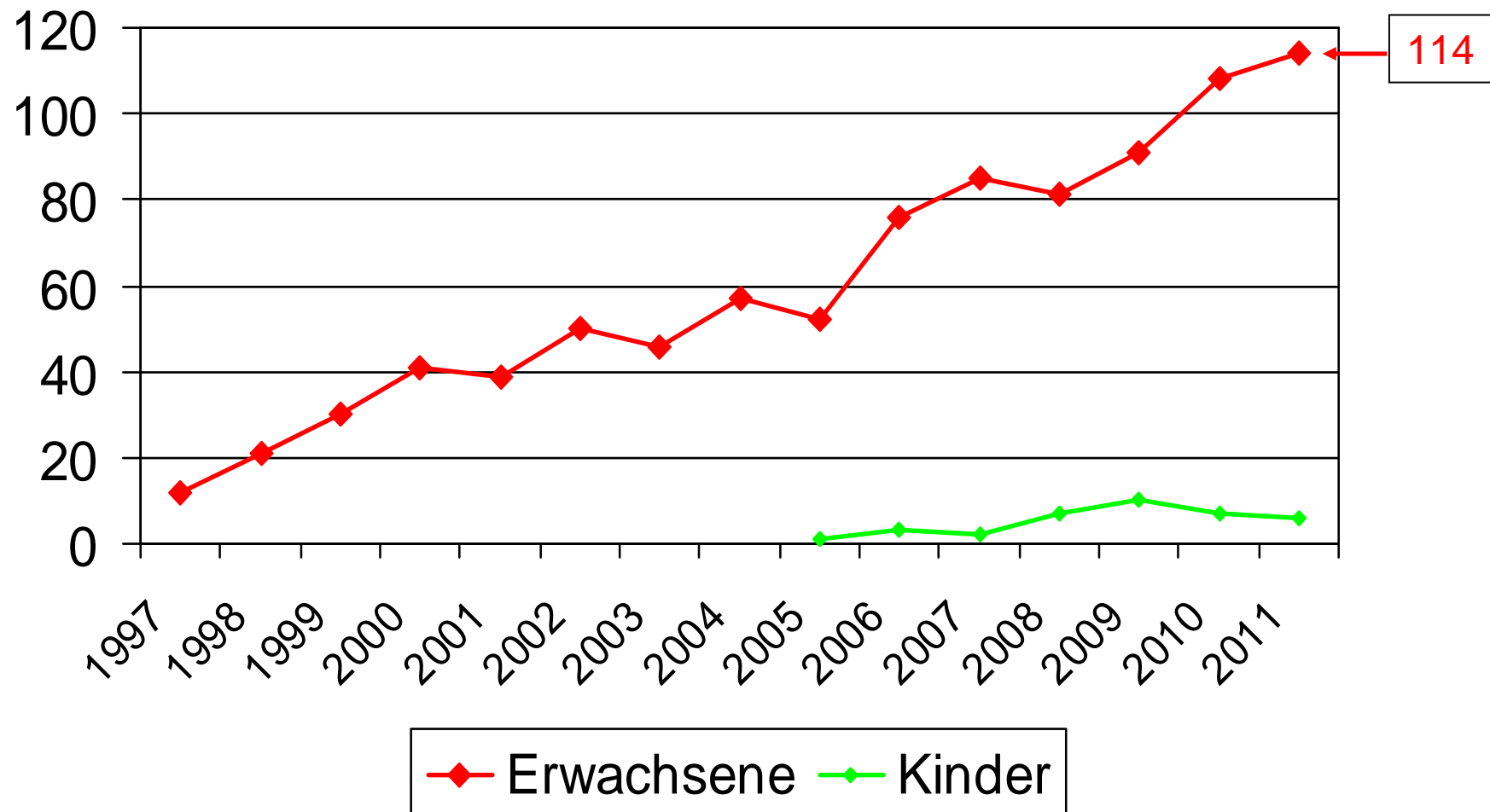
Neuvorstellungen: 183



■ Keine Ind. ■ Tod vor TPL ■ Suche



HD: allogene Transplantationszahlen





Allogene Transplantation Kinderklinik



- Allogene Tpl: n = 6
- Spender: MD (n = 3)
MSD (n = 2)
MMUD (n = 1)
- Diagnosen: JMML (n = 1)
SCID (n = 2)
ALL, CR1 (n = 1)
b-Thalassämie (n = 2)

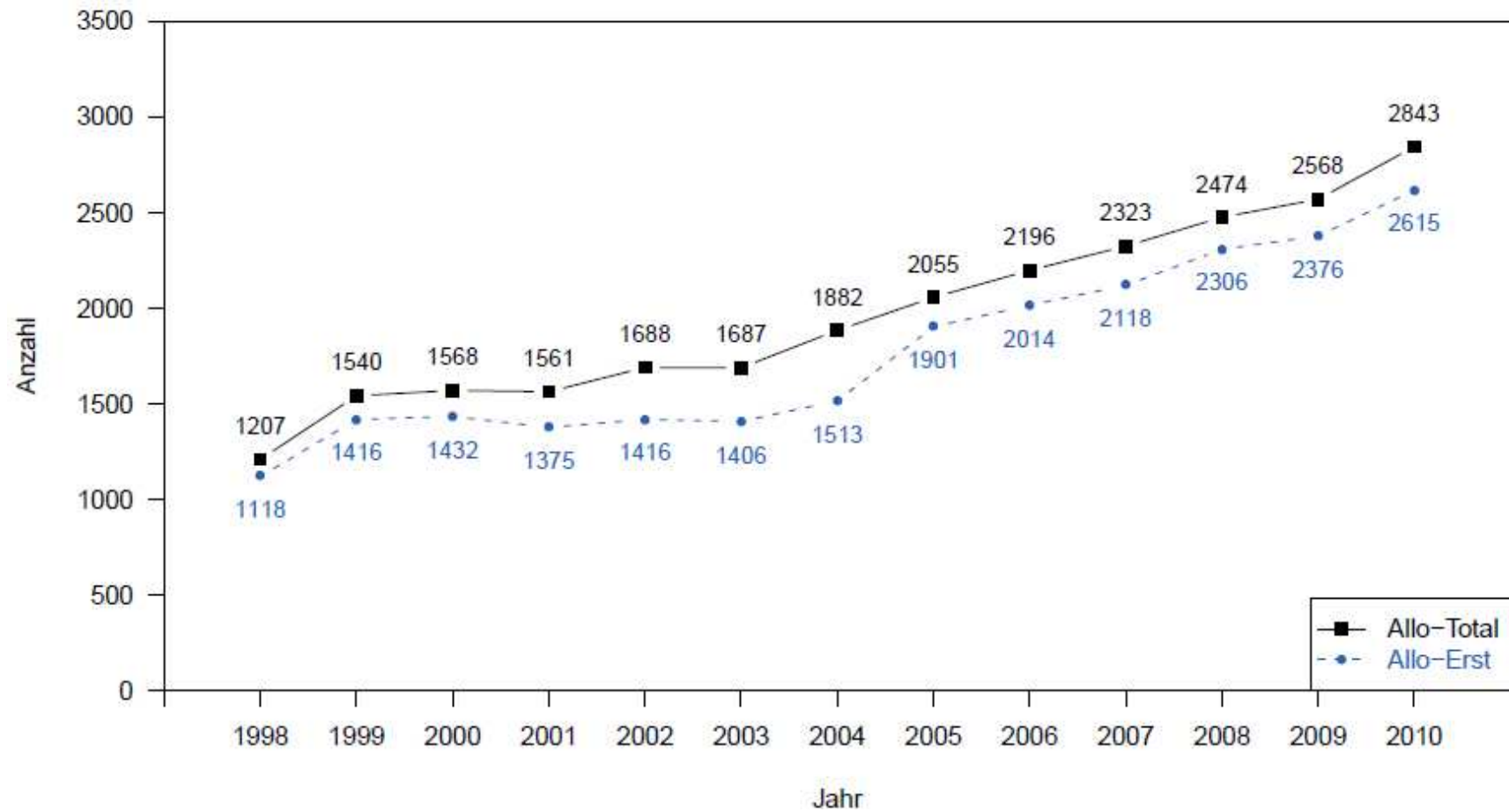


Allogene Transplantation Kinderklinik



- Art des Transplantats: PBMC (n = 3)
KM (n = 3)
- Konditionierung: myeloablativ (n = 6)
- Primäres Engraftment: (n = 6)
- Remissionsstatus: CR (n = 5).
TRM (n = 1)

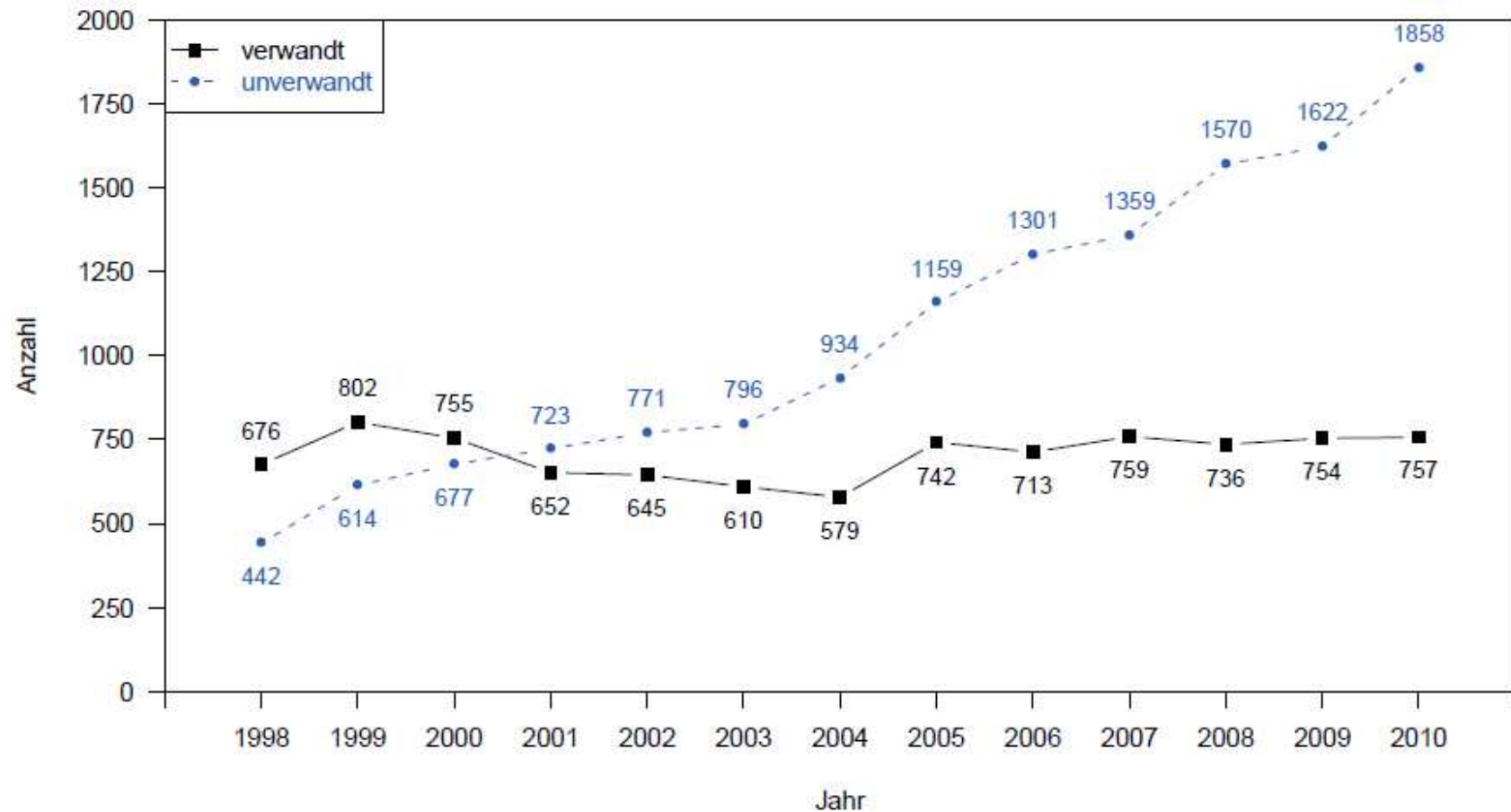
HST in Deutschland



2010: HD mit 108 alloHST an 6. Stelle in Deutschland



Spender: verwandt vs. unverwandt

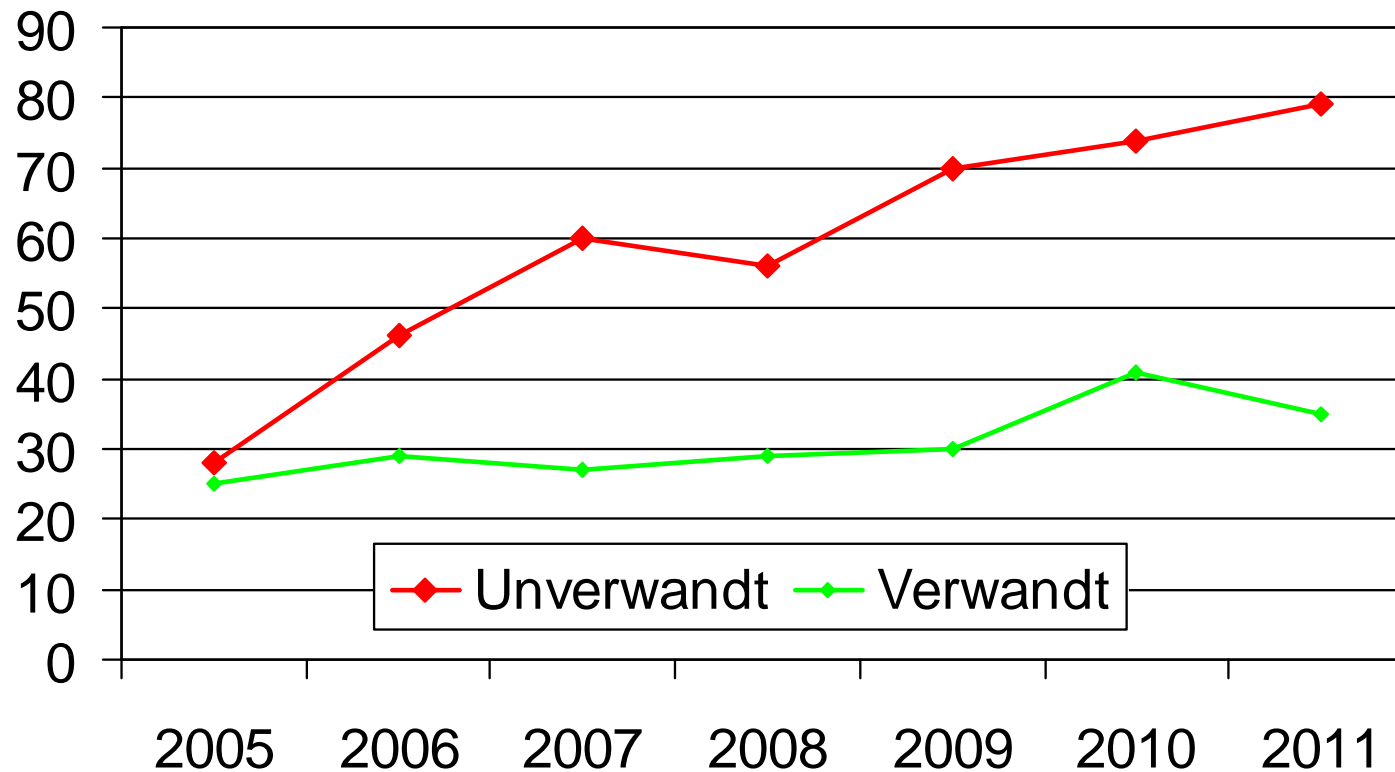


2010: 71% unverwandte Spender in Deutschland



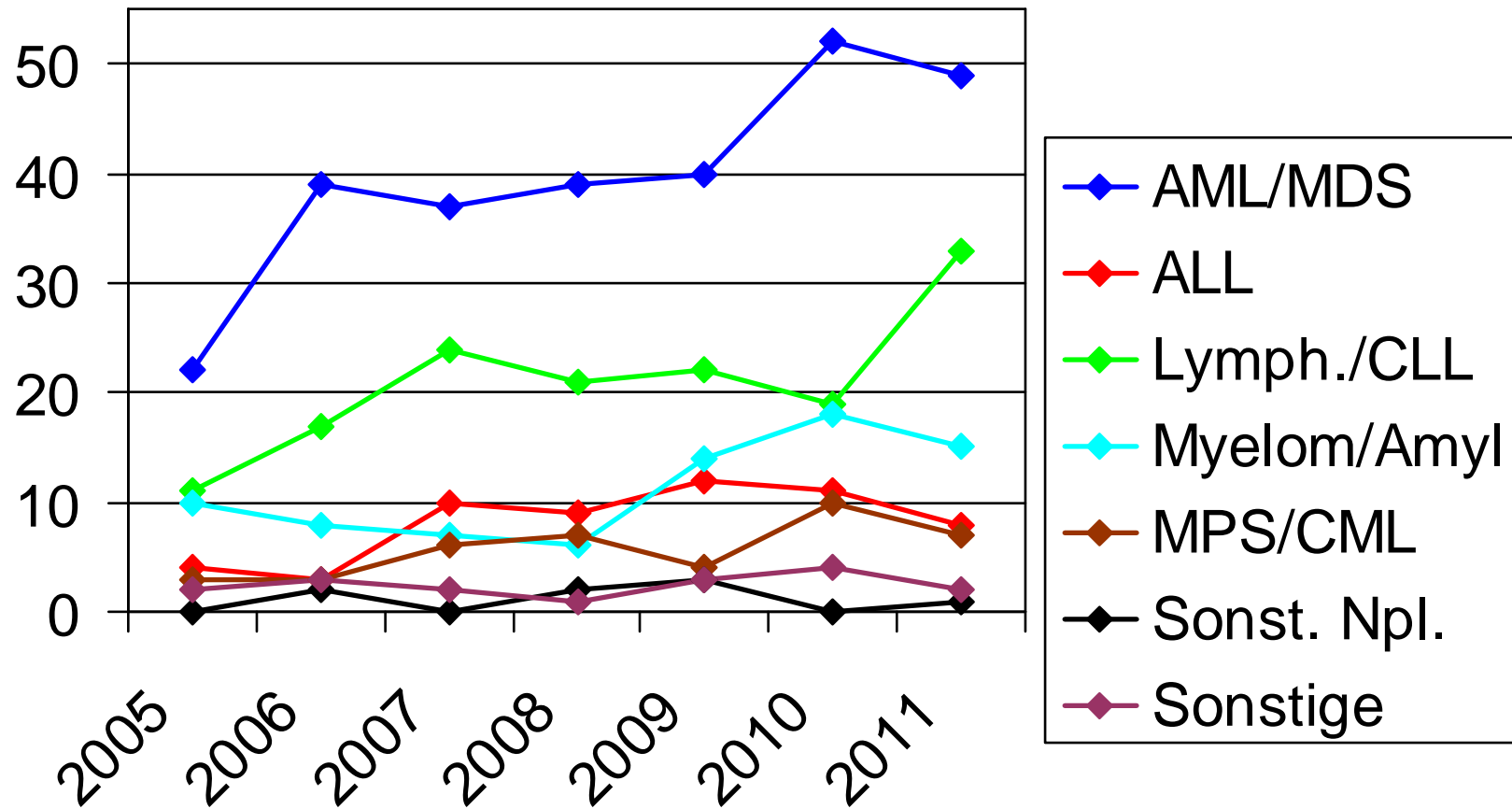


HD: Spender 2005-2011





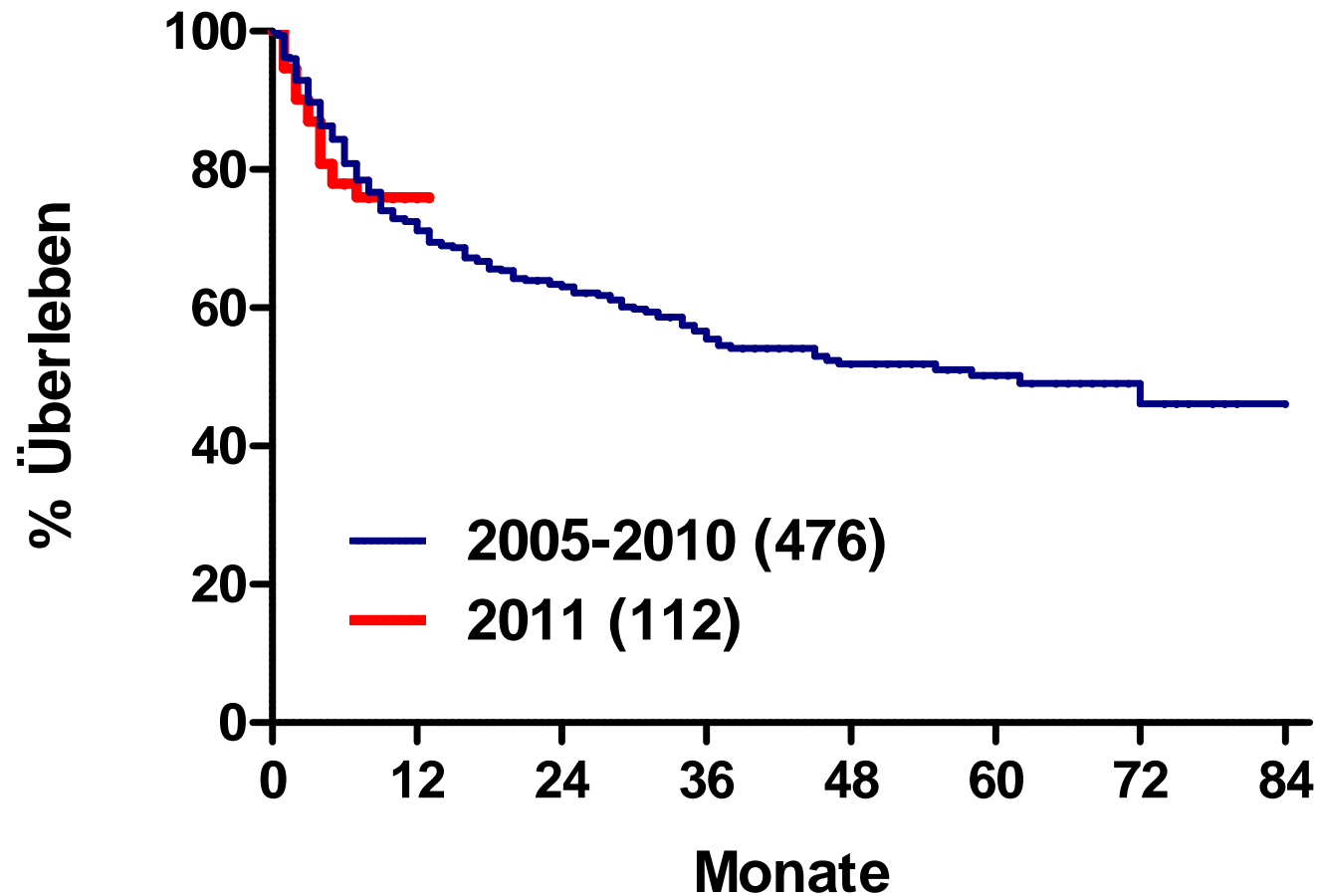
HD: Indikationen 2005-2011



Ergebnisse

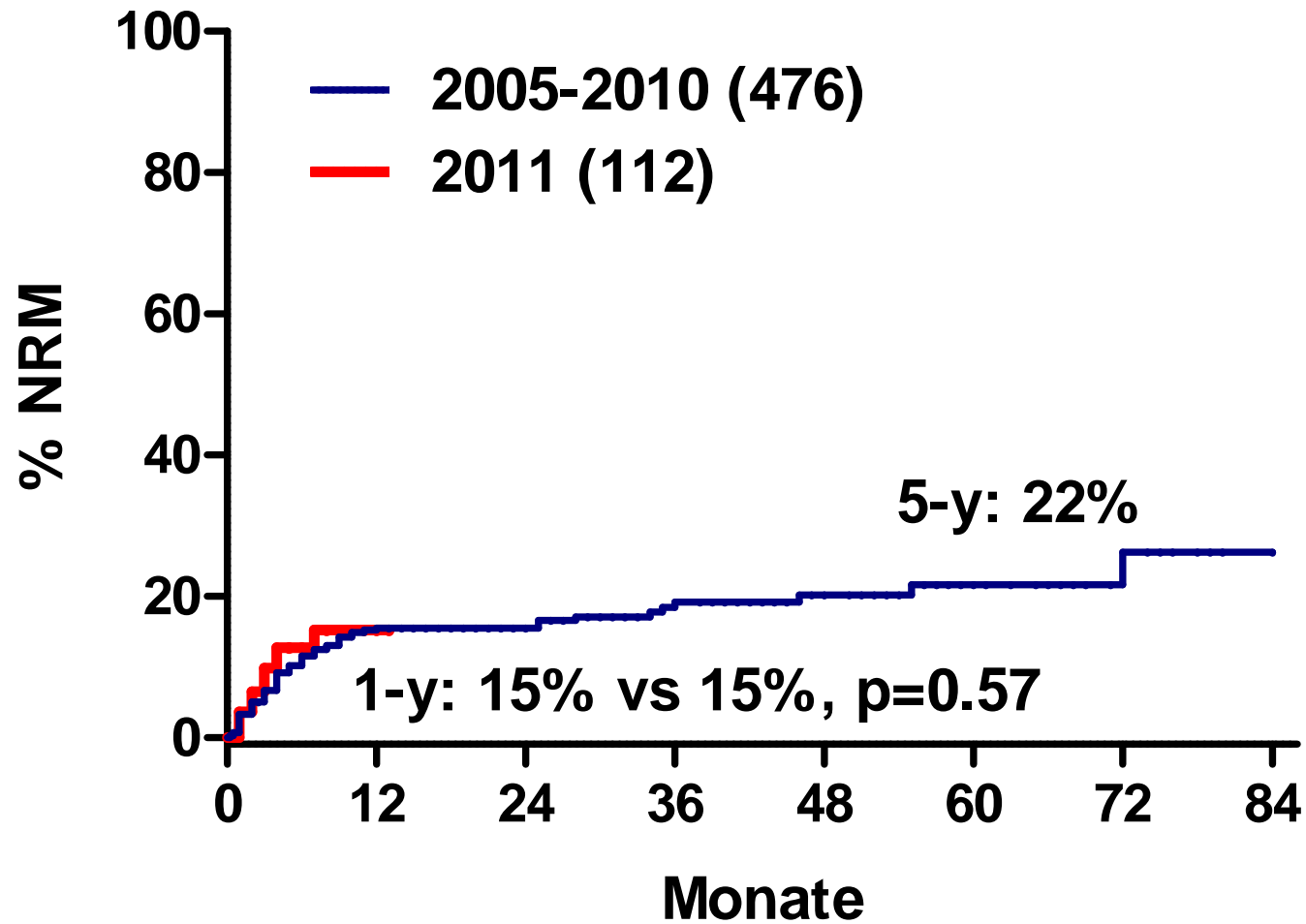


HD: Gesamtüberleben (Erwachsene)





Non-Relapse Mortality (Erwachsene)





Ursachen NRM in 2011 im Einzelnen

(der vor 2011 Transplantierten)

- Akute GVHD: 2
(Mo +4, Mo +13)
- Chronische GVHD: 2
(Mo +20, Mo +36)
- Infektion: 1
(Mo +72)
- Zweitmalignom: 2
(Mo +46 (Colon-Npl), Mo +123 (Ösophagus-Npl.))



Ursachen NRM im Einzelnen

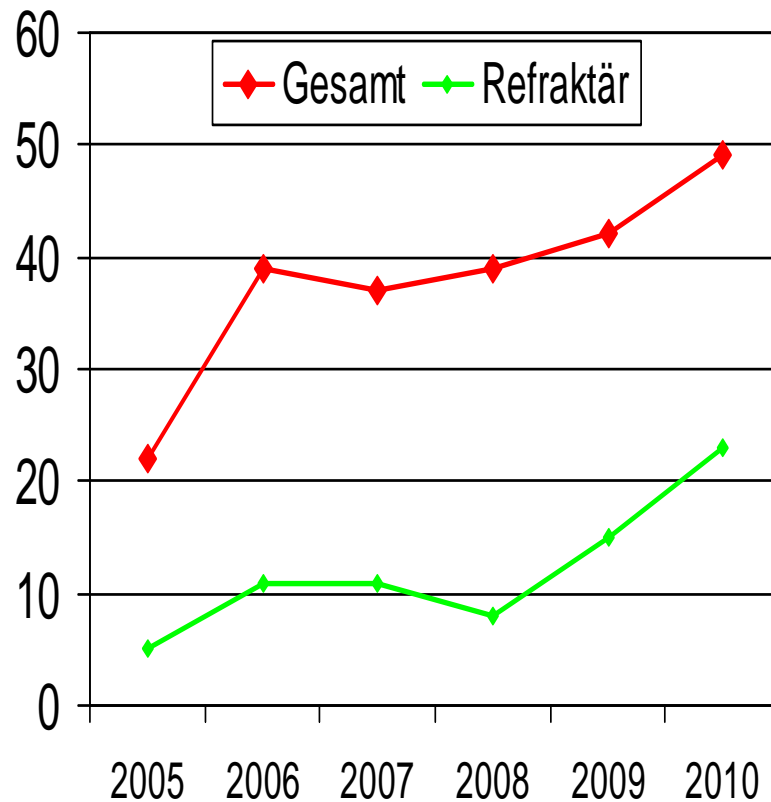
(der in 2011 Transplantierten)

- Tod in primärer Aplasie: 5
(d +3, d +6, d +12, d +26, d +39)
- Akute GVHD: 4
(d +67, d +96, d +97, d +99)
- Pneumonie: 3
(d +69, d +147, d +201)
- Andere: 1
(d +107)

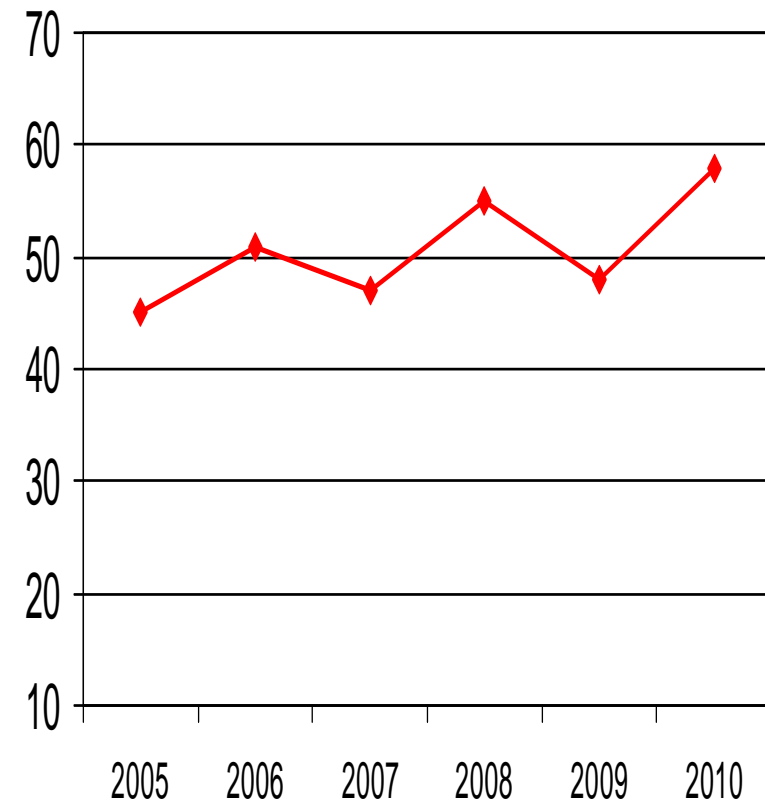


HD: Transplantationszahlen AML+MDS

Fälle pro Jahr



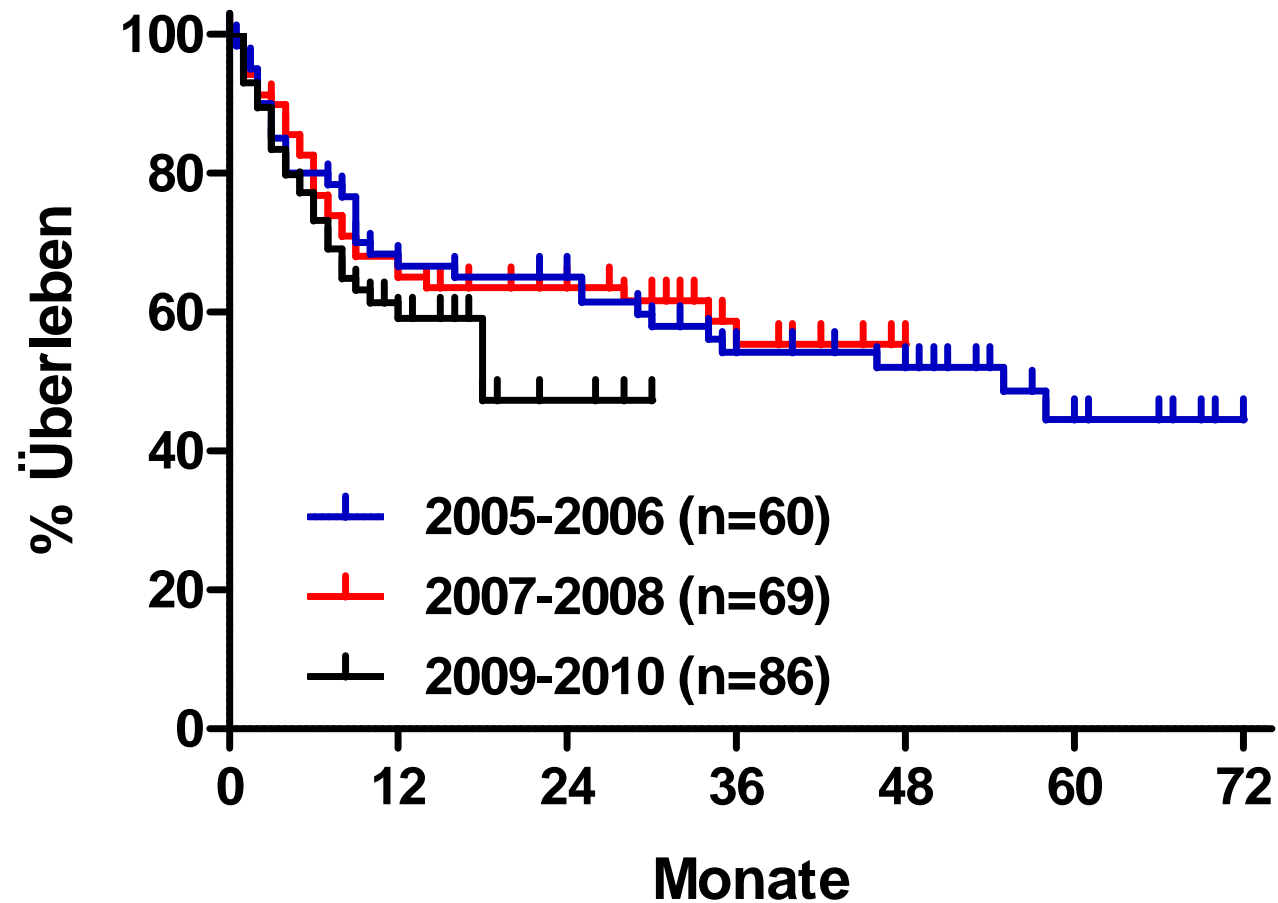
Medianes Alter in Jahren





HD: Gesamtüberleben AML/MDS

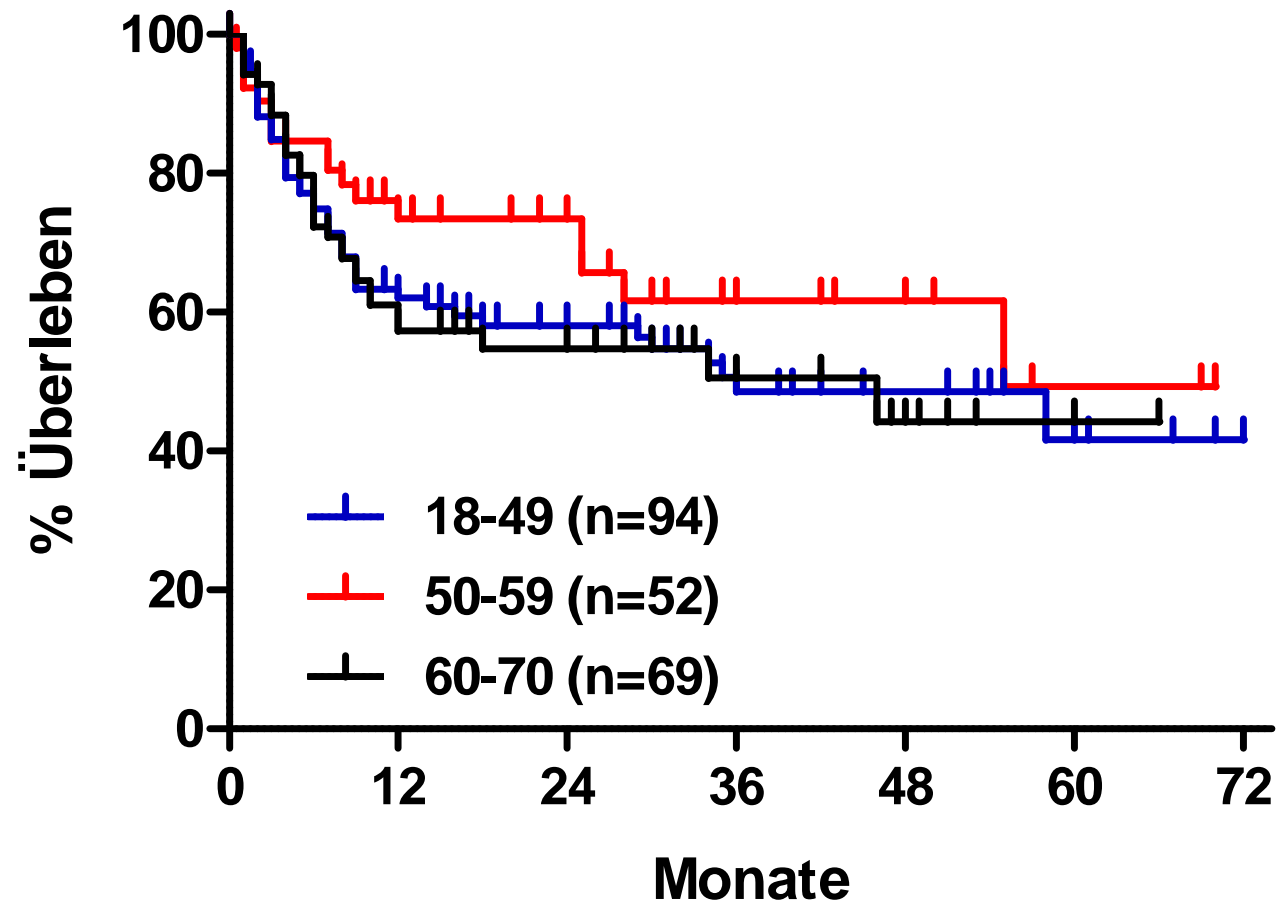
Effekt Kalenderjahr





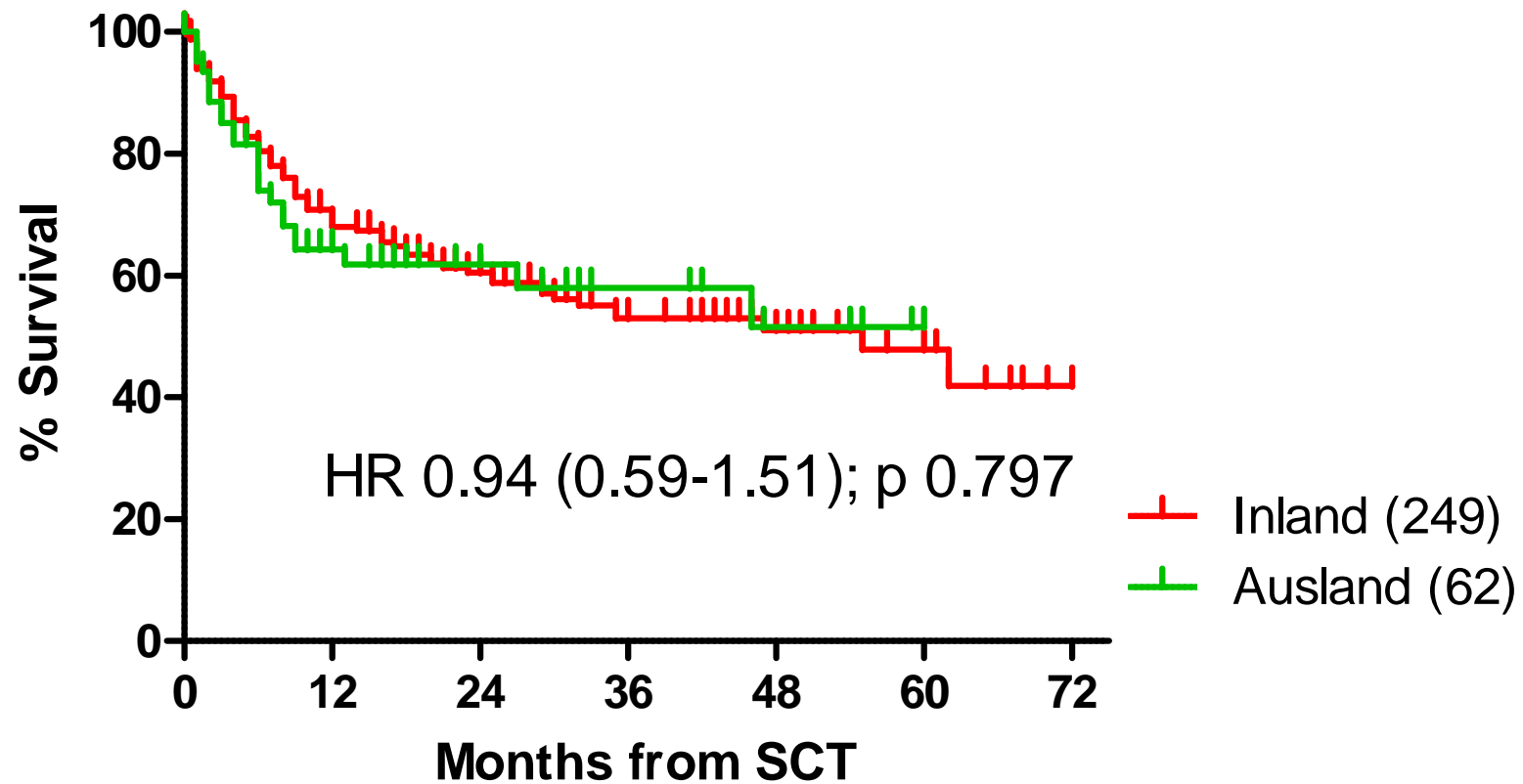
HD: Gesamtüberleben AML/MDS

Effekt Alter



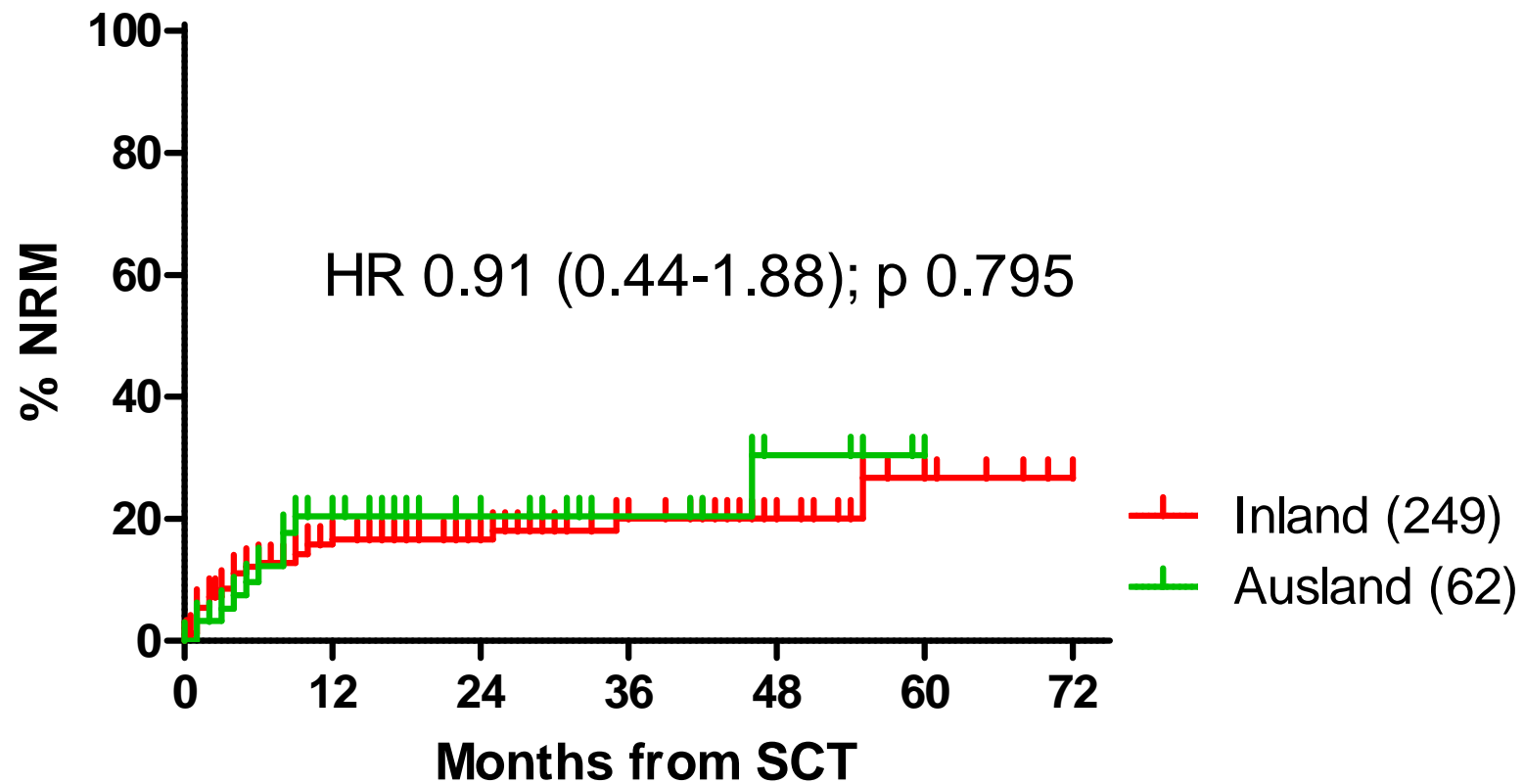


Heidelberg: OS by UD source (2005-2010; n = 311)



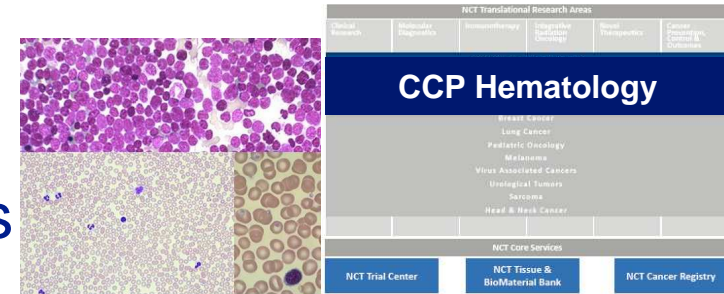


Heidelberg: NRM by UD source (2005-2010; n = 311)



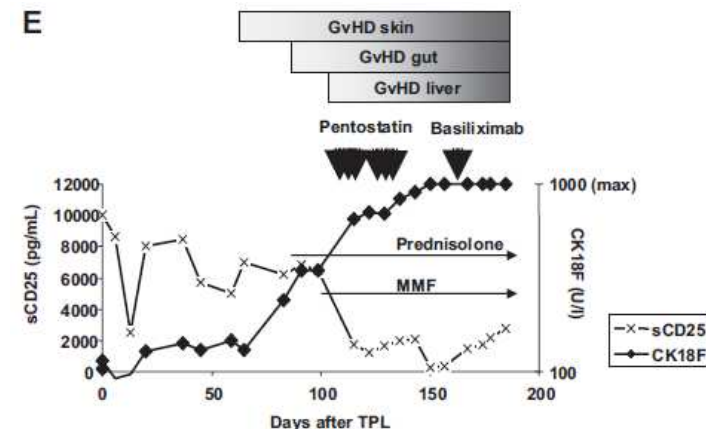
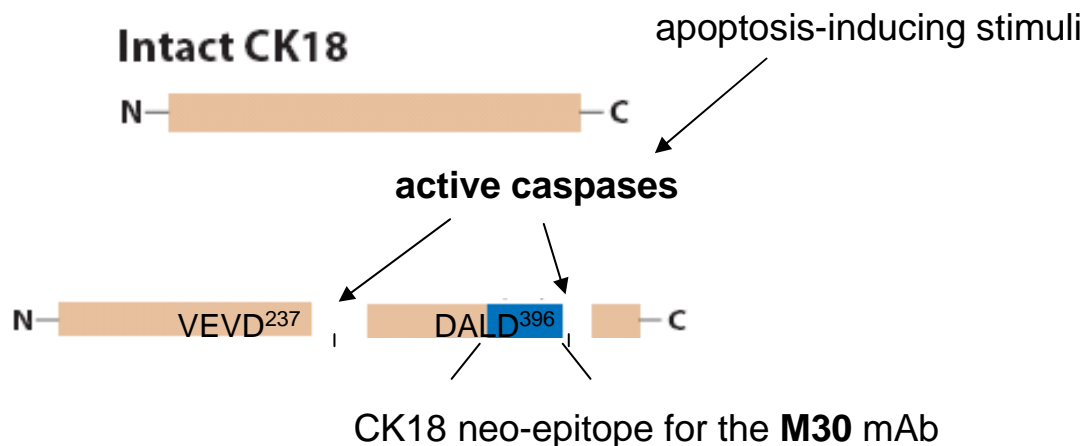
Studien

NCT Clinical Cancer Program Hematopoietic Malignancies Significant Accomplishments & Highlights



Development of CK18F as GVHD biomarker

- 2006: Identification of apoptosis marker CK18F as potential GVHD activity
- 2007: Retrospective assessment of clinical applicability (Luft et al, **Blood** 2007)
- 2009: Initiation of clinical study for clinical validation and launch of interdisciplinary project to delineate steroid-refractory GVHD (with grant support by Helmholtz Alliance for Immunotherapy, HAIT; Chair: Peter Krammer)
- 2011: Reaching accrual target of clinical study (145 patients).
- 2011: Characterization of endothelial vulnerability as basis of GVHD refractoriness
- 2011: Impact of statins on GVHD refractoriness
- 2011 Start LEBENS-Studie



blood

Prepublished online June 2, 2011;
doi:10.1182/blood-2011-02-334821

Steroid-refractory GVHD: T-cell attack within a vulnerable endothelial system

Thomas Luft, Sascha Dietrich, Christine Falk, Michael Conzelmann, Michael Hess, Axel Benner, Frank Neumann, Berend Isermann, Ute Hegenbart, Anthony D. Ho and Peter Dreger

blood

2011 117: 2604-2613
Prepublished online December 29, 2010;
doi:10.1182/blood-2010-09-306308

Effects of a partly self-administered exercise program before, during, and after allogeneic stem cell transplantation

Joachim Wiskemann, Peter Dreger, Rainer Schwerdtfeger, Andrea Bondong, Gerhard Huber, Nikolaus Kleindienst, Cornelia M. Ulrich and Martin Bohus



AG GVHD

Mitglieder

- Thomas Luft
- Michael Hess
- Sascha Dietrich
- Sandra Sauer
- AM Geueke
- Thomas Schmitt
- Michael Schmitt
- Mindaugas Andrulis

Projekte

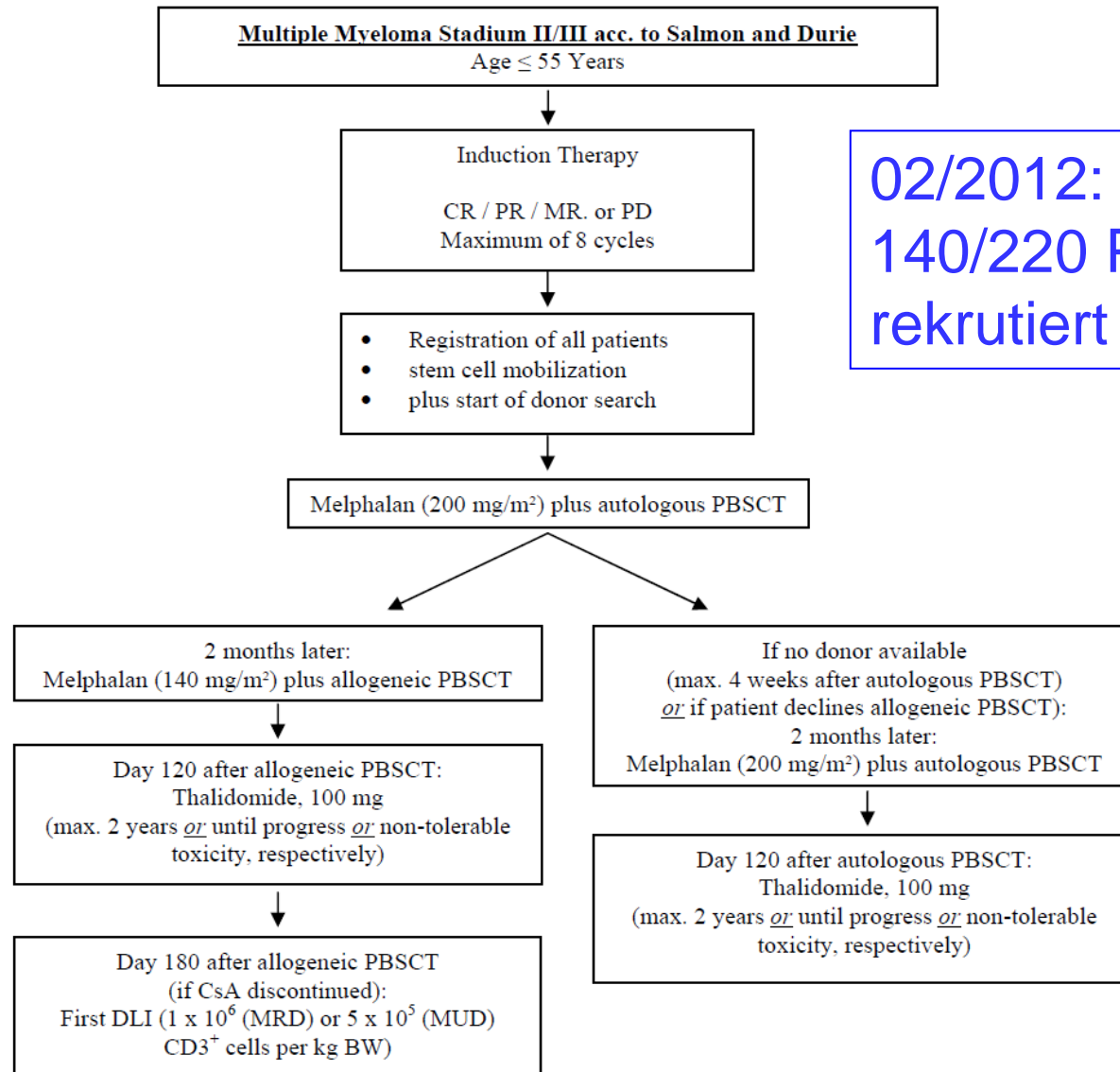
- Steroid-refraktäre GVHD
- Endothel und GVHD
- Statine
- CK18F-Studie
- LEBENS-Studie (in Koop. mit Abt. Präventive Onkologie / NCT)

**Autologous-Allogeneic Tandem Stem Cell Transplantation
and Maintenance Therapy with Thalidomide / DLI
for patients with Multiple Myeloma (MM)
and age \leq 55 years:
A phase II-study**

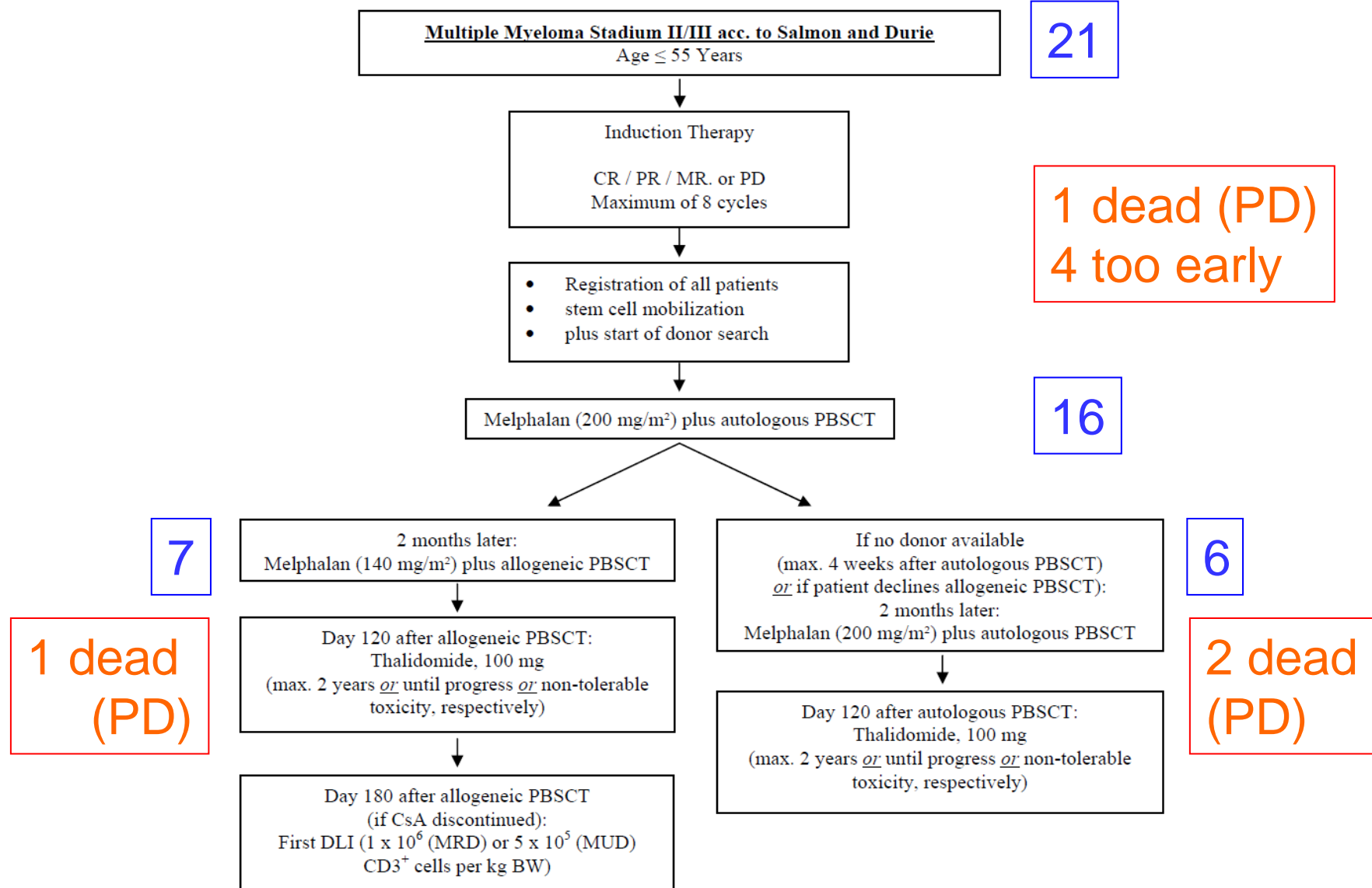
Version: June 13, 2008

EUDRACT-Number	2007-004928-21
Sponsor	University Medical Center Hamburg-Eppendorf
Coordinating Investigator and "Leiter der Klinischen Prüfung" according to German Drug Law	Nicolaus Kröger Interdisziplinäre Klinik und Poliklinik für Stammzelltransplantation Universitätsklinikum Hamburg-Eppendorf Martinistrasse 52, 20246 Hamburg Tel. +49-40-42803-4850/-4851 Fax +49-40-42803-3795 E-Mail: nkroeger@uke.uni-hamburg.de
Co-Investigators	<p>Joachim Kienast Martin Kropff Medizinische Klinik und Poliklinik A Universitätsklinik Münster Albert-Schweitzer-Strasse 33, 48129 Münster Tel. +49-251-83-47590 Fax +49-251-83-47592 E-Mail: kienast@uni-muenster.de kropff@uni-muenster.de</p> <p>Ute Hegenbart Medizinische Klinik Klinik für Innere Medizin V (Onkologie, Hämatologie und Rheumatologie) Universitätsklinikum Heidelberg Im Neuenheimer Feld 410 69120 Heidelberg Tel. +49-06221-56-8009 Fax +49-06221-56-5721 E-Mail: ute.hegenbart@med.uni-heidelberg.de</p>

Phase-II-Studie auto-allo vs auto-auto in der Primärtherapie der multiplen Myloms: Design

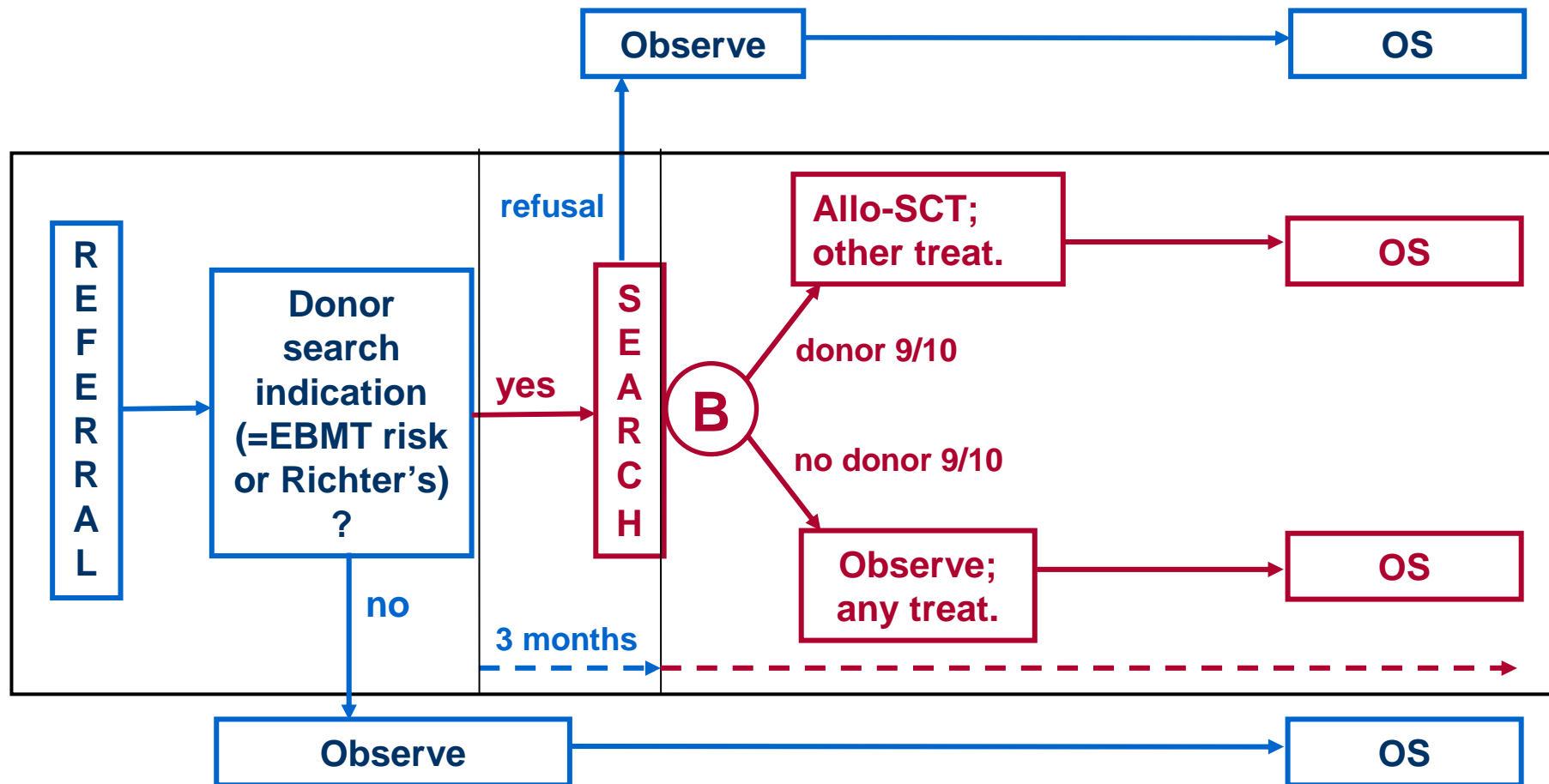


Auto-allo vs auto-auto 1st-line bei MM: Patienten Heidelberg 02/2012





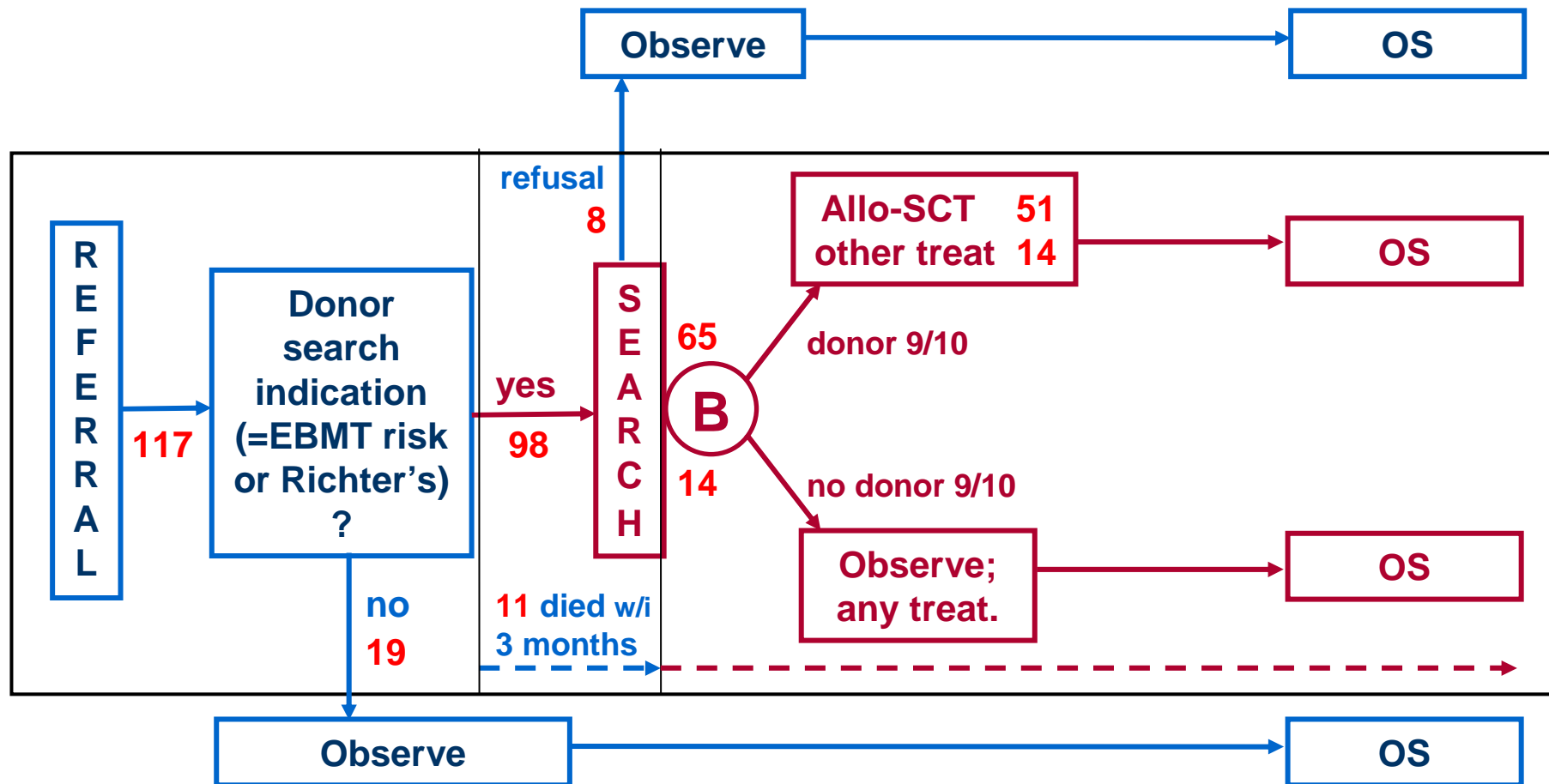
Retrospective donor vs no-donor study (by EBMT indication; Heidelberg 6/2005-7/2011)





Heidelberg donor vs no-donor CLL study

Patient flow





More at EBMT 2012!

(Herth et al, Tue
April 3, 14:00)



Tuesday, April 03, 2012
14:00 - 15:30
Room A

Oral Session 8

Multiple myeloma / Chronic leukaemia / Myelodysplastic syndromes

Chair: Nigel Russell (Nottingham, UK)
Curly Morris (Belfast, UK)

- 14:00 - 14:12 **Phase II study of azacitidine (Vidaza®, Aza) and donor lymphocyte infusions as first salvage therapy in patients with acute myeloid leukaemia or myelodysplastic syndromes relapsing after allogeneic haematopoietic stem cell transplantation** O 250
Thomas Schroeder, Akos Czibere, Nicolaus Kröger, Uwe Platzbecker, Gesine Bug, Lutz Uharek, Thomas Luft, Christine Wolschke, Roland Fenk, Rainer Haas, Guido Kobbe (Düsseldorf, Hamburg, Dresden, Frankfurt, Berlin, Heidelberg, DE)
- 14:12 - 14:24 **Impact of azacitidine prior to allogeneic stem cell transplantation for myelodysplastic syndromes: a large-scale study on behalf of the SFGM-TC and GFM groups** O 251
Gandhi Damaj, Alain Duhamel, Marie Robin, Mauricette Michallet, Mohamad Mohty, Vigouroux Stéphane, Yves Beguin, Alice Garnier, Bruno Lioure, Jean El Cheikh, Nathalie Fegueux, Jérôme Cornillon, Lionel Adés, Sylvie François, Marie-Thérèse Rubion, Anne Huyn, Jean Pierre Marolleau, Sophie Park, Frederico Garnier, Pierre Fenaux, Ibrahim Yakoub-Agha for the SFGM-TC
- 14:24 - 14:36 **First evidence that alloSCT can improve the natural course of poor-risk chronic lymphocytic leukaemia as defined by the EBMT consensus criteria: a retrospective donor versus no donor comparison** O 252
Isabelle Herth, Ute Hegenbart, Sascha Dietrich, Michael Rieger, Peter Stadtherr, Andrea Bondong, Hien Tran, Thorsten Zenz, Anthony D. Ho, Peter Dreger (Heidelberg, DE)
- 14:36 - 14:48 **Treatment with alemtuzumab prior to allogeneic stem cell transplantation in patients with advanced chronic lymphocytic leukaemia – results of a prospective phase II trial (NCT 00337519)** O 253
Johannes Schetelig, Martin Bornhäuser, Christian Thiede, Alexander Kiani, Uwe Platzbecker, Brigitte Mohr, Uta Oelschlägel, Mathias Hänel, Herrad Baurmann, Karin Kolbe, Martin Kaufmann, Matthias Zeis, Kerstin Schäfer-Eckart, Gerhard Ehninger on behalf of the German Cooperative Transplant Study Group
- 14:48 - 15:00 **Comparative efficacy of tandem autologous-autologous versus tandem autologous-reduced intensity allogeneic haematopoietic cell transplantation in multiple myeloma: results of a systematic review and meta-analysis** O 254
Mohamed Khafan-Dabaja, Mehdi Hamadani, Tea Reljic, William Bensinger, Benjamin Djulbegovic, Ambuj Kumar (Beirut, LB; Morgantown, Tampa, Seattle, US)
- 15:00 - 15:12 **Tandem autologous transplantation versus autologous plus reduced-intensity conditioning allogeneic transplantation in the management of newly diagnosed multiple myeloma: meta-analysis of all prospective trials with biological randomisation** O 255
Luciano Costa, Kent Armeson, Elizabeth Hill (Charleston, US)

Networking

Tandem Autologous/Reduced-Intensity Conditioning Allogeneic Stem-Cell Transplantation Versus Autologous Transplantation in Myeloma: Long-Term Follow-Up

Bo Björkstrand, Simona Iacobelli, Ute Hegenbart, Astrid Gruber, Hildegard Greinix, Liisa Volin, Franco Narni, Pellegrino Musto, Meral Beksac, Alberto Bosi, Giuseppe Milone, Paolo Corradini, Hartmut Goldschmidt, Theo de Witte, Curly Morris, Dietger Niederwieser, and Gösta Gahrton



Current status of hematopoietic cell transplantation in the treatment of systemic amyloid light-chain amyloidosis

SO Schönland¹, P Dreger¹, T de Witte² and U Hegenbart¹

¹Department of Internal Medicine V—Haematology, Oncology and Rheumatology, Amyloidosis Center, University of Heidelberg, Heidelberg, Germany and ²Radboud University Nijmegen Medical Centre, Nijmegen, The Netherlands, on behalf of the Chronic Leukemia Working Party of the European Blood and Marrow Transplantation Society



Bone Marrow Transplantation (2011), 1–11
© 2011 Macmillan Publishers Limited All rights reserved
www.nature.com/bmt

ORIGINAL ARTICLE

Hematopoietic stem cell transplantation in T-prolymphocytic leukemia: a retrospective study from the European Group for Blood and Marrow Transplantation and the Royal Marsden Consortium

W Wiktor-Jedrzejczak¹, C Dearden², L de Wreede³, A van Biezen³, L Brinch⁴, V Leblond⁵, M Brune⁶, L Volin⁷, M Kazmi⁸, A Nagler⁹, J Schetelig¹⁰, T de Witte¹¹ and P Dreger¹² on behalf of the EBMT Chronic Leukemia Working Party




Leukemia (2011) 1–5
© 2011 Macmillan Publishers Limited
www.nature.com/leu

Publikationen

Publikationen (peer-reviewed) 2011

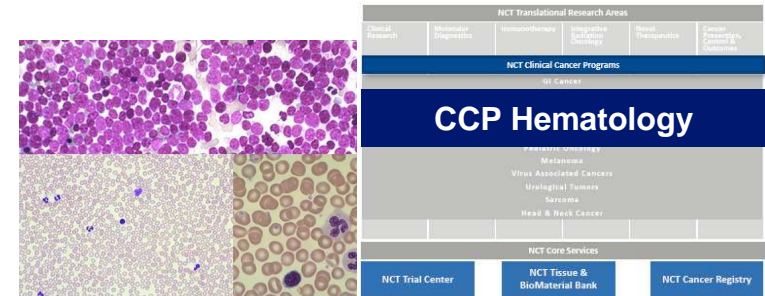
Topic	Publications in 2011	Author	Journals - IF
GVHD	Steroid-refractory GVHD: T-cell attack within a vulnerable endothelial system	T. Luft et al.	Blood 10.588
GVHD	Pentostatin for Treatment of Steroid-Refractory Acute GVHD: A Retrospective Single Center Analysis.	T. Schmitt et al.	BMT 3.660
Supportiv	Effects of a partly self-administered exercise program prior to, during and after allogeneic SCT: a randomized controlled trial	J. Wiskemann et al.	Blood 10.588
Lymphoma	AlloSCT in non-Hodgkin lymphoma (Review)	P. Dreger	Ann Oncol 6.452
Lymphoma	Patterns and outcome of relapse after autologous stem cell transplantation for mantle cell lymphoma	S. Dietrich et al.	Cancer 5.131
BPDC	Blastic plasmacytoid dendritic cell neoplasia in elderly patients: Results of a treatment algorithm employing allo-SCT ...	S. Dietrich et al.	BBMT 3.275
CLL	Leflunomide Overcomes CD40L/IL-4-Mediated Resistance to Fludarabine-Induced Apoptosis ...of CLL Cells	S. Dietrich, T. Luft et al.	CCR 7.338
CLL	Allo-SCT for CLL: Lessons to be learned from minimal residual disease studies (Review)	S. Böttcher, P. Dreger et al.	Blood Reviews 6.797
CLL	Current strategies for the diagnosis and management of CLL, with a focus on poor-risk CLL (Review)	F. McClanahan, P. Dreger	Turk J Hematol 0.6
T-PLL	HSCT in T-PLL: a retrospective study from the EBMT and the Royal Marsden Consortium	W. Wiktor-Jedrzejczak, P. Dreger et al.	Leukemia 8.966
PCD	Tandem Autologous / RIC Allogeneic SCT vs Autologous Transplantation in Myeloma: Long-Term Follow-Up	B. Björkstrand, U. Hegenbart, H. Goldschmidt et al.	JCO 18.970
PCD	Current status of hematopoietic cell transplantation in the treatment of systemic amyloid light-chain amyloidosis (Review)	S, Schönland, U. Hegenbart et al.	BMT 3.660

Oral presentations at major meetings 2011

Topic	Oral presentations in 2011	Presenters	Meetings
GVHD	Endothelial TM expression in refractory GVHD	S. Dietrich, M. Andrulis	EBMT
AML	Tox of Aplasia Conditioning	S. Jung	EBMT, DGHO
CLL	Impact of TP53 lesions on allo-SCT (CLL3X)	P. Dreger, T. Zenz	EBMT
CLL	Auto vs FCR (CLL3 vs CLL8)	S. Dietrich, P. Dreger	ICML, iwCLL
GVHD	Role of endothelium in refractory GVHD	T. Luft	ASH, DGHO
Lymphoma	TBI for 1st ASCT in FL (EBMT) 	I. El-Najjar, P. Dreger	ASH
Topic	Invited talks at major meetings 2011	Presenter	Meetings
CLL	AlloSCT in CLL	P. Dreger	EBMT
Lymphoma	AlloSCT in NHL	P. Dreger	ICML

Veranstaltungen

NCT Clinical Cancer Program Hematopoietic Malignancies Overview



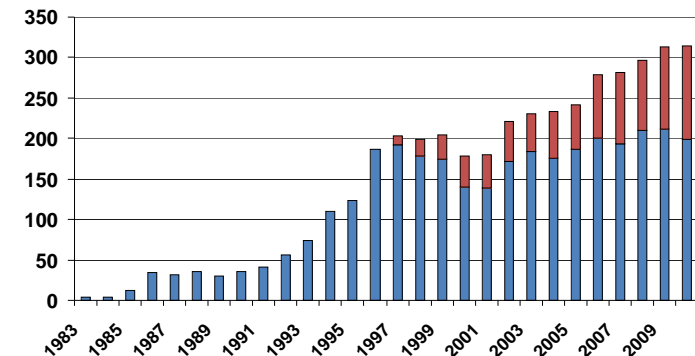
Integration into NCT

- Covers all hemato-oncological patient-related care, Tumor Boards, and research within NCT
- Bridge for translational activities via
 - Clinical Cooperation Unit Molecular Hematology
 - SFB 873 / SFB-TR 79
 - Other grant-supported cooperations with DKFZ (Myeloma radiodiagnostics, HAIT) and NCT departments (Physical exercise and SCT)

Clinical Activities & Competences

- Section Stem Cell Transplantation (2010: 199 autologous, 108 allogeneic)
- Section Multiple Myeloma
- Coordination of Center for Amyloidosis at UKHD
- Lymphoma / CLL and AML / MDS
- Clinical care accomplishment 2010: >7300 CMI points

■ Auto ■ Allo



Patient Numbers in 2009

- Lymphoma + Myeloma / Leukemia (newly diagnosed): 493 / 77
- Lymphoma + Myeloma / Leukemia (treated): 1162 / 552
- Trial enrollment: 203 of 570 newly diagnosed patients (36%)



CLL-Studientreffen 23.-24.9.2011 in Heidelberg



Leiter: Prof. Dr. Michael Hallek, Köln



CLL-Studientreffen 23.-24.9.2011 in Heidelberg

Patiententag 05.11.2011 in Heidelberg



Gratwanderung?

**Leben nach einer
Stammzelltransplantation**





ERROR: ioerror
OFFENDING COMMAND: image
STACK: